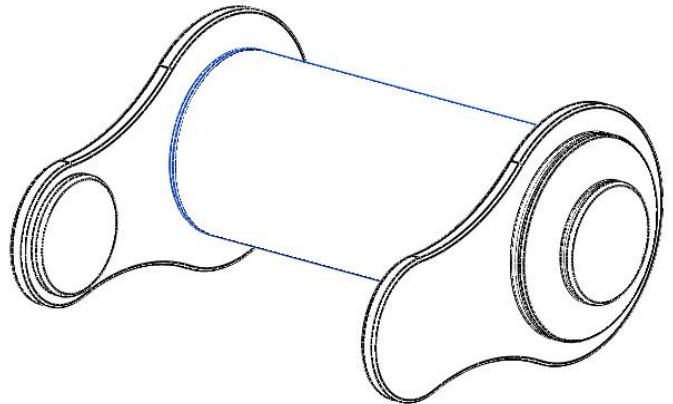


Body Bumper

INSTRUCTIONS FOR USE

Codes 43111, 43121, 43131



CONTENTS	PAGE
1.0 INTRODUCTION	1
2.0 ILLUSTRATION OF YOUR BODY BUMPER	2
3.0 FOR YOUR SAFETY	2
4.0 UNPACKING YOUR BODY BUMPER	3
5.0 SETTING UP AND ADJUSTING YOUR BODY BUMPER	3
6.0 CARE & MAINTENANCE	4
7.0 GUARANTEE & SERVICE	5
8.0 CONTINUOUS IMPROVEMENT	5
9.0 WARRANTY & AFTERSALE	6

1.0 INTRODUCTION

Thank you for choosing your new Smirthwaite Body Bumper.

The Body Bumper has been designed to facilitate strengthening of a child's upper and lower body. By kneeling in front of the product, a child's upper body strength can be developed by rolling the product backwards and forwards. The product can also be used to strengthen thigh and calf muscles by placing his or her feet on the product and rolling it backwards and forwards.

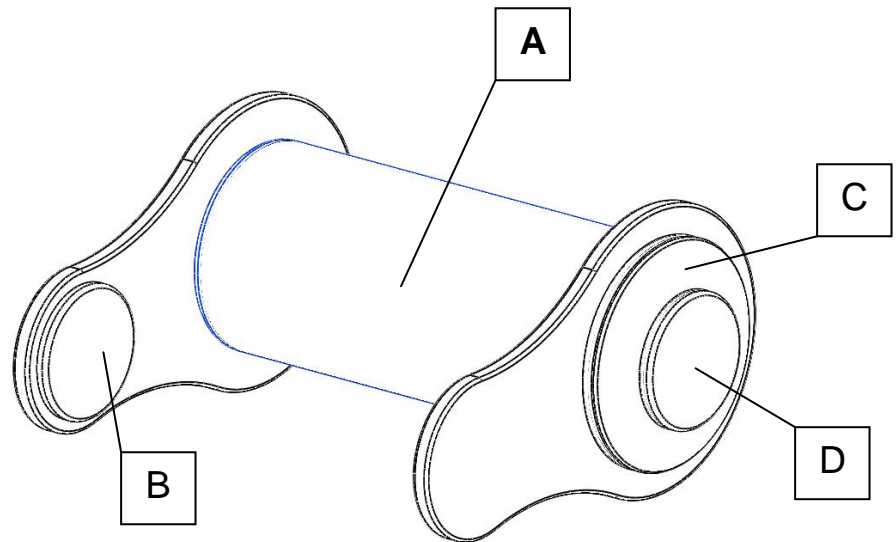
IMPORTANT!

These instructions should be read before using the equipment and should be retained for future reference.

Any incorrect use of the product and failure to follow the instructions may put the user at risk or impede the function. If you have any queries using this product or wish for further copies, please do not hesitate to contact Customer Service department on
T: +44 (0) 1626 835552.

2.0 ILLUSTRATION OF YOUR BODY BUMPER

- A. Main vinyl pad
- B. Side vinyl pad
- C. End vinyl pad
- D. Padded push button



3.0 FOR YOUR SAFETY

PLEASE READ THESE INSTRUCTIONS BEFORE USING THE BODY BUMPER.

- The user should NOT be left unattended whilst using the product. Always ensure a responsible adult or carer is in attendance.
- The carer should be familiar with the methods of adjustment and have completed all adjustments appropriately to meet the needs of the child before use.
- Regular maintenance checks and cleaning are essential for the safe use of this equipment (see care and maintenance section).
- If any part is loose, damaged or functioning incorrectly, do not use until rectified.
- This product is intended for indoor use only.
- Always keep this product away from naked flames, cigarettes and sources of heat including open fireplaces, radiators and heaters.
- The product is ONLY to be used on a flat level surface.

- DO NOT fit parts or accessories of other manufacturers to this product unless authorised to do so in writing by G&S Smirthwaite Ltd. Failure to follow these instructions will not only invalidate the guarantee but could make the product dangerous to use. G&S Smirthwaite Ltd will not accept liability for any injury or damage incurred through such malpractices. Any repairs required must be carried out by G&S Smirthwaite Ltd authorised personnel.

If you believe this product to be faulty - **DO NOT USE** - Contact G&S Smirthwaite Ltd on T: +44 (0) 1626 83552.

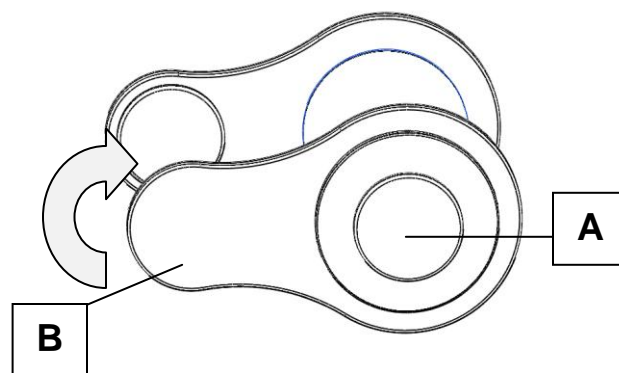
4.0 UNPACKING YOUR BODY BUMPER

- The Body Bumper is supplied fully assembled.
- Please take note of any instructions on the packaging/box when unpacking.
- Once the product has been carefully unpacked, please check all parts.
- If any part is loose, damaged or functioning incorrectly, do not use until rectified.

Should you wish to query any aspect of your product, please contact G&S Smirthwaite Customer Services on T: +44 (0) 1626 83552 or info@smirthwaite.co.uk.

5.0 SETTING UP AND ADJUSTING YOUR BODY BUMPER

The amount of rotation permitted by the Body Bumper when in use can be limited by rotating the right hand side wood support. This is achieved by depressing button (A) and then turning side (B) to the desired position before releasing button (A). Note, side (B) can be locked into step positions of 45°.



6.0 CARE AND MAINTENANCE

All our wooden products are easy to clean.

! CAUTION CLEANING IS RECOMMENDED ON A REGULAR BASE.

- Clean upholstery and wooden parts with a damp cloth and mild detergent.
- Stubborn marks on the woodwork should be cleaned by using a soft brush.
- Do not soak or immerse the product in water.
- Store the product in a cool dry place out of direct sunlight.
- DO NOT use bleach, solvents, abrasives, synthetic detergents, wax polishes, antibacterial sprays or wipes.

! CAUTION REGULAR MAINTENANCE CHECKS ARE RECOMMENDED.

DAILY & MONTHLY CHECKS

- Check the product for damage or loose components.
- Check the structure of the product for signs of damage wear and tear.
- Keep all parts clean.

7.0 GUARANTEE & SERVICE

The Body Roller is issued with a full parts and labour guarantee for **2** years from the date of delivery. This guarantee does not apply to accidental damage caused through inappropriate use of the product. This guarantee is issued at the discretion of G&S Smirthwaite Ltd on RTB (Return to Base) basis. If you have any questions or doubts relating to the safety or use of the chair please contact us for advice or assistance on:

T: +44 (0) 1626 835552
E: info@smirthwaite.co.uk

8.0 CONTINUOUS IMPROVEMENT

G&S Smirthwaite Ltd are committed to continuous improvement to their product range. Should you have any suggestions or comments please send them to our product design department at: info@smirthwaite.co.uk.

G&S Smirthwaite Ltd reserve the right to change the specification or material without prior notice.

For catalogues, help and further information on our products please contact us at:

G&S Smirthwaite Ltd
17 Wentworth Road
Heathfield
Devon TQ12 6TL

T: +44 (0) 1626 835552
F: +44 (0) 1626 835428

E: info@smirthwaite.co.uk
W: www.smirthwaite.co.uk



G & S Smirthwaite, 17 Wentworth Road, Heathfield, Newton Abbot, Devon.TQ12 6TL
T: +44 (0) 1626 835552 F: +44 (0) 1626 835428 E: enquiries@smirthwaite.co.uk
W: www.smirthwaite.co.uk